



# FAQ

## AHLAN WORLD

### CAIRO

---

أهلا وسهلا بالقاهرة

# TABLE OF CONTENTS

1. [ABOUT US](#)
2. [WHY CAIRO](#)
3. [GENERAL COURSES](#)
4. [MEDIA COURSES](#)
5. [SCHOOL LIFE](#)
6. [ACCOMMODATION](#)
7. [USEFUL INFORMATION](#)
8. [TRAVEL AROUND EGYPT](#)
9. [LIFE IN CAIRO](#)
10. [TERMS AND CONDITIONS](#)
11. [CONTACTS](#)





# 01 ABOUT US

Ahlan World is comprised of Arabic language centers in Egypt and Jordan. Each of the centers shares Ahlan World's philosophy, which views foreign language not only as a goal, but also as a tool that enables and encourages greater understanding between cultures.

Accordingly, Ahlan courses combine language learning with an introduction to local customs and traditions for the student in order to have a comprehensive experience that goes beyond language classes.

Outside the classroom, students are offered the opportunity to take part in initiatives with local organizations, attend seminars, and participate in weekly extracurricular activities or trips.

**LET'S START!**





EMBARK ON YOUR  
ARABIC JOURNEY  
WITH **AHLAN:**  
IMMERSE YOURSELF,  
REACH YOUR GOAL!

# WHY Cairo

## 02



At Ahlan, you'll experience the real Egypt. Located in the heart of Old Cairo, the school welcomes a plethora of students from around the world for the chance not just to learn Arabic, but also to gain a deep understanding of one of the world's richest cultures. You'll feel at home right away, thanks to the welcoming teachers, staff, and students. In the classroom, teachers use a variety of visual aids to teach, providing cultural context to life in Egypt with news articles, music, and clips from TV shows and movies. Classrooms also provide the foundation for cultural exchange, with ample opportunities to compare and contrast traditions, beliefs, and practices between Egypt and students' home countries.

# WHY CAIRO

At Ahlan, foreign language isn't just a communication tool taught in the classroom, but also a tool that enables and encourages greater understanding between cultures. Students are encouraged to interact with each other, as well with other students and staff members, both inside and outside the classroom. At any given moment, students can be seen practicing their oral and conversation skills, seeking out others to ask them questions using recently learned vocabulary. What's more, Ahlan Cairo boasts an impressive schedule of activities that allows students to become intimately familiar with the various historical, cultural, and religious sites of Cairo. Every so often, students will have the opportunity to take trips outside of Cairo to popular areas of Egypt such as Luxor, Aswan, and Alexandria



# 03

## COURSES

---

**MODERN STANDARD ARABIC  
(MSA)**

---

**MODERN STANDARD ARABIC  
INTENSIVE (MSAI)**

---

**EGYPTIAN COLLOQUIAL ARABIC  
(ECA)**

---

**AHLAN LINGUIST PACKAGE  
(MSA + ECA)**

---

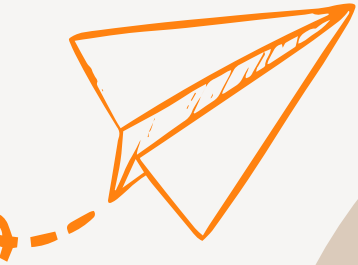
**ONE-TO-ONE CLASSES**

**LET'S DIVE INTO IT!**



# COURSES

## WHAT TO OFFER



### **Arabic**

**is a beautiful and diverse language**

and as such, alongside lessons with our expert teachers, the institute offers many activities **to enrich and diversify your opportunities to practice Arabic.**

Time outside the city; frequent visits to historical sites and markets (souks); meeting local people, and making friends with Egyptians, are just some of the many great ways to increase your language skills.

**No matter your level, whether you are learning Modern Standard Arabic (MSA) or Egyptian Colloquial Arabic (ECA), Ahlan World encourages you to embrace Arabic and practice speaking and reading the language both inside and outside the institute.**





# COURSES

## WHAT TO EXPECT

### Ahlan World Cairo

offers courses for Arabic students of **all levels - including complete beginners.**

**Modern Standard Arabic (MSA) course:** three hours daily; 9:00am – 12:15pm

**Modern Standard Arabic (MSA) – Intensive:** three hours MSA, daily and two hours Extra Linguistic Activities, daily; 9:00am – 12:15pm, 1:00-3:00pm.

**Egyptian Colloquial Arabic (ECA) course:** two hours daily; 1:00-3:00pm.

**Extra Linguistic Activities** comprise a number of activities, such as games that test linguistic skills and conversation, or a **combination of MSA and ECA courses.**

- **Note:** This course is only available to students who are not absolute beginners.

**The number of students in any standard group course is limited to 2-8 students per class.**

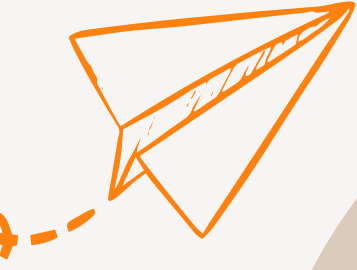
We also provide **one-to-one classes** and **special group courses**, year-round.

Ahlan also offer a special programme called the '**Teacher Training Programme**'. It is cheaper and combines MSA classes led by training teachers with those held by our expert teachers.

# COURSES

## WHAT TO EXPECT

### Ahlan World Cairo



offers **long-term programmes** for both MSA and ECA, as well as the option of a combined programme for both. For students who would like to study for four months or more.

In the case that a student is the only person in their level, rather than pushing them into a lower or higher level, we prefer to organise one-to-one lessons and the class/course time will be reduced to 70% of the standard group course.

**Our team of teachers is composed of professional, highly experienced, Arabic native speakers, specialized in teaching Arabic to foreigners.**

The school uses a humanistic-communicative approach where each student is encouraged to play a central role in their learning process. Teaching methods are based on the principle that a language is learned to communicate in every-day situations and the techniques used allow the student to practice in what they already know through conversational situations. In addition to conversational activities such as **scene play, role play and group discussions**, there are also games which serve to further stimulate communication in the language.





# GROUP COURSES





# MSA COURSES

IN A GROUP

## MODERN STANDARD ARABIC

MSA

**MSA courses** give students the **linguistic essentials** of the Arabic language, with a focus on the foundations of its structure, grammar rules, and key vocabulary. MSA is primarily used in **Arabic media, academic texts, religious scripts, literature and in formal settings**, rather than on the streets and in everyday conversations.

Nonetheless, most Arabs understand and use MSA, regardless of where they are from or which dialect they speak. MSA is most closely related to the **classic, original form of the Arabic language** upon which the many different **dialects were initially based and formed**.

*MSA courses are 3 hours per day, 5 days per week*

**MSA intensive course** encompasses all of the material in the standard MSA course listed above, but with an **additional** focus on vocabulary and grammar specifics, comprehension activities, games that test various linguistic skills, and conversation practice. The intensive course is **one of the best options** for those students wishing to make the most out of their time in Cairo.

*Intensive MSA courses are 5 hours per day, 5 days per week.*

## INTENSIVE MODERN STANDARD ARABIC

MSA INTENSIVE



TIP FROM US

*Many students choose to study MSA at the start of their Arabic journey and then take on a specific dialect according to their particular interests or location in the Arab world.*

# ECA COURSES

IN A GROUP

EGYPTIAN  
COLLOQUIAL  
ARABIC

ECA

ECA courses offer students an immersive study of the Egyptian dialect, which is used by locals for everyday interactions and conversation.

Study of ECA focuses less on universal aspects of the Arabic language (which would be found in an MSA course) and instead provides the essentials of navigating life in an Arab country, including important vocabulary, phrases, and sayings that students may hear daily while living abroad.

*ECA courses are 2 hours per day, 5 days per week.*



TIP FROM US

*If you are interested in intense ECA course you can add one-to-one lessons to your schedule.*

# OTHER COURSES



## AHLAN LINGUISTIC PACKAGE

MSA + ECA

**The Ahlan Linguist Package** combines the advanced linguistic study and universalism of **Modern Standard Arabic (MSA)**, with specific knowledge of the Egyptian **colloquial arabic (ECA)**, providing students with a **comprehensive understanding** of the Arabic language and its varied uses.

Students in the course will gain **unique proficiency** in the language as well as flexibility regarding future study, as they will have experience in both **MSA and ECA**.

*Ahlan Linguist Package consists of 3 hours per day MSA classes plus 2 hours per day ECA classes, 5 days per week.*

**NOTE**



**THIS COURSE IS NOT AVAILABLE FOR ABSOLUTE BEGINNERS**



# INDIVIDUAL COURSES



# INDIVIDUAL COURSES



## ONE-TO-ONE CLASSES

MSA / ECA

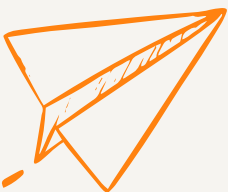
**One-to-one classes** are also available year-round, **both at the school and online**, upon request. These classes can be held at a time that best suits the student and according to teacher availability.

Students wishing to request specific times for one-to-one classes must do so **during registration**, or **at least one week before** the course begins. If preferences are not expressed ahead of time, **Ahlan World Cairo** will select the class times.

### NOTE



**ONE-TO-ONE CLASSES ARE AVAILABLE BETWEEN SUNDAY AND THURSDAY - FROM 9 AM TO 8 PM**







# 04 MEDIA & JOURNALISM COURSE

AHLAN WORLD CAIRO OFFERS **THREE UNIQUE MEDIA COURSES** THAT PROVIDE STUDENTS WITH AN IDEAL OPPORTUNITY TO EXPERIENCE WHAT IT IS LIKE TO WORK AS A **JOURNALIST IN THE ARAB WORLD**. MEDIA COURSES ARE ONLY AVAILABLE FOR INTERMEDIATE AND ADVANCED STUDENTS ENROLLED IN AHLAN'S MSA COURSES.



# JOURNALISM



Each day students will study and analyse examples of journalism in Arabic media, including news stories and features produced by Arab and foreign broad casters such as Al Jazeera, BBC Arabic and al-Arabiyya.

The course consists of an MSA course (1.5 hours) and 2.5 hours that include:

- The study of media texts, providing an opportunity for students to practise Arabic instruction in grammar and journalistic style and professional terminology
- How to report on aspects of city life
- How to conduct a professional media interview in Arabic meetings with local journalists
- Visits to newspapers and broadcasters' production of an in-house newspaper general Arabic language classes combined with general knowledge and current topics



The total cost of the course is 500 € for 80 hours (4 hours per day).



**NOTE:** *if there is only one student per course the class time will be halved.*

WITH  
LANGUAGES,  
YOU ARE AT  
HOME  
ANYWHERE





COURSES BEGIN EVERY TWO WEEKS ON SUNDAY,  
-WITH SOME EXCEPTIONS- AS FOLLOWS:

# CALENDAR 2024



14th Jan  
28th Jan  
11th Feb  
25th Feb  
10th March  
24th March  
7th April  
21st April  
5th May  
19th May  
2nd June  
16th June  
30th June  
14th July  
28th July  
11th Aug  
25th Aug  
8th Sep  
22nd Sep  
6th Oct  
20th Oct  
3rd Nov  
17th Nov  
1st Dec  
15th Dec  
29th Dec

## HOLIDAYS 2024\*

1 Jan Monday **New Year's Day**  
10 Apr Wednesday **Eid al-Fitr** (Tentative Date)  
11 Apr Thursday **Eid al-Fitr holiday** (Tentative Date)  
12 Apr Friday **Eid al-Fitr holiday** (Tentative Date)  
13 Apr Saturday **Eid al-Fitr holiday** (Tentative Date)  
1 May Wednesday **Labour Day**  
25 May Saturday **Independence Day**  
15 Jun Saturday **Arafah** (Tentative Date)  
16 Jun Sunday **Eid al-Adha** (Tentative Date)  
17 Jun Monday **Eid al-Adha holiday** (Tentative Date)  
18 Jun Tuesday **Eid al-Adha holiday** (Tentative Date)  
19 Jun Wednesday **Eid al-Adha holiday** (Tentative Date)  
7 Jul Sunday **Muharram/New Year** (Tentative Date)  
15 Sep Sunday **Prophet's Birthday** (Tentative Date)  
25 Dec Wednesday **Christmas Day**

\*THESE HOLIDAYS MAY VARY ACCORDING TO THE  
LUNAR CALENDAR/CYCLE

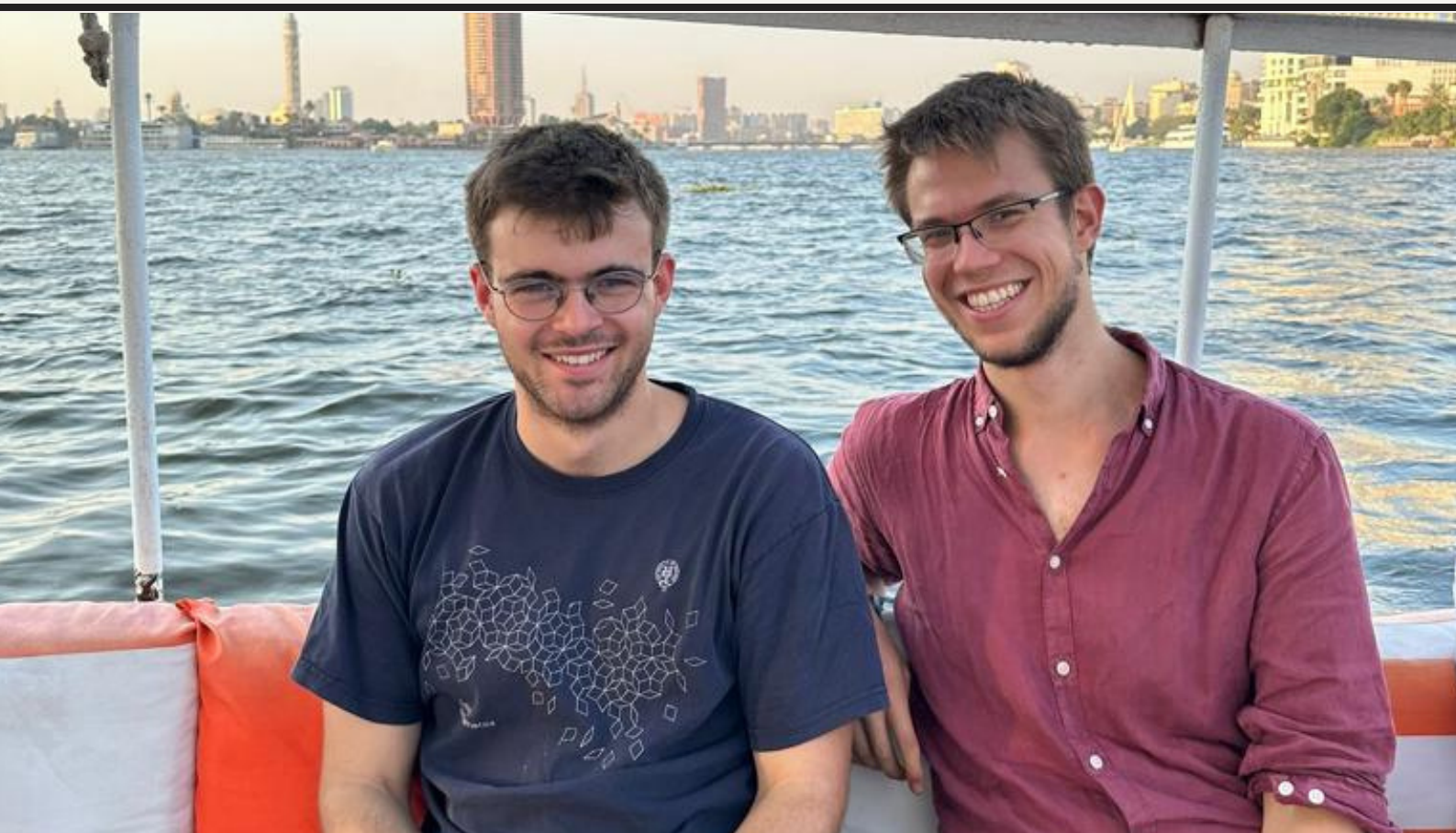
In the case of a public holiday at any point during a course, missed days will be discounted from the overall course price. In the case of bad weather conditions (snow or heavy rain), the government sometimes declares all public and non-public offices closed. Normally, this is not more than a week per year, nor is it necessarily every year. In such circumstances, we cannot take responsibility for cancelled classes and rescheduling is not guaranteed.



# SPECIAL PROGRAM

**Ahlan world** runs classes **all year round** in different cities at the same time. Therefore, if a student chooses a program of **longer than six weeks**, he/she can move, at any time, between **Alexandria, Cairo or Amman**. This special offer allows you to change cities and explore **new experiences** while still following the Arabic study program!

Students enrolled in **one-to-one** or **small group classes** can schedule classes at a time that suits them (between Sunday and Thursday, from 9:00 am to 8:00 pm), but timing will also depend on teacher availability. If students have specific time preferences, they must be specified during registration or at least **two weeks before courses begin**. If preferences are not expressed ahead of time, Ahlan will select the class times.



# GROUP COURSES (STANDARD)



FEES	Price p/week*	16 weeks	24 weeks	36 weeks	48 weeks
Modern Standard Arabic (MSA)	115 \$	1735 \$	2465 \$	3500 \$	4395 \$
MSA Intensive (MSAI)	185 \$	2815 \$	4000 \$	5670 \$	7110 \$
Egyptian Colloquial Arabic (ECA)	100 \$	1485 \$	2115 \$	3000 \$	3765 \$
Ahlan Linguist Pack (MSA+ECA)	195 \$	2980 \$	4230 \$	6000 \$	7525 \$

# GROUP COURSES (TEACHER TRAINING PROGRAMME)

FEES	Price p/week*	16 weeks	24 weeks	36 weeks	48 weeks
<b>Modern Standard Arabic (MSA)</b>	80 \$	1245 \$	1765 \$	2500 \$	3140 \$
<b>MSA Intensive (MSAI)</b>	135 \$	2070 \$	2945 \$	4165 \$	5235 \$
<b>Egyptian Colloquial Arabic (ECA)</b>	60 \$	995 \$	1405 \$	1995 \$	2510 \$

\*From 1 to 15 weeks

- MSA courses are 3 hours per day, 5 days per week.
- Intensive MSA courses are 5 hours per day, 5 days per week.
- ECA courses are 2 hours per day, 5 days per week.
- The Linguist Package is a compound of MSA and ECA for a total of 5 hours per day.

<b>One-to-One (Experienced Teacher)</b>	16 \$/hr	<b>Online (Experienced Teacher)</b>	11 \$/hr
<b>One-to-One (Training Teacher)</b>	9 \$/hr	<b>Online (Training Teacher)</b>	6 \$/hr
<b>One-to-One (advanced)</b>	22 \$/hr	<b>Online (advanced)</b>	16 \$/hr



05

AT AHLAN WORLD JORDAN

# SCHOOL LIFE



On your first day, we will complete any necessary administrative tasks. Be ready and bring your passport with you!



# CLASS HOURS

## GROUP COURSES

Standard lessons are held **five days per week, Sunday to Thursday**. Class hours are:

- **MSA:** 3 hours (9:00am - 12:00pm)
- **MSA Intensive:** 5 hours (9:00am - 12:00pm) and (1:00pm - 3:00pm)
- **ECA:** 2 hours (1:00pm - 3:00 pm)
- **Ahlan linguistic package:** 5 hours (9:00am – 12:00pm) and (1:00pm - 3:00pm)

**Please note: If a student enrolled on one of our group courses is the only one in their level, we will arrange one-to-one classes, equivalent in material and price but shorter in time.**

**In this case, the number of hours per week for each course will be as follows:**

- **MSA – 10 hours**
- **MSA Intensive – 15 hours**
- **ECA – 7 hours**

## ONE-TO-ONE CLASS HOURS

Students enrolled in **one-to-one or small group classes** can schedule classes at a time that suits them (**Sunday to Thursday, from 9:00 am to 8:00 pm**), depending on teacher availability. If students have specific time preferences, they must be specified **during registration** or **at least one week** before courses begin. If preferences are not expressed ahead of time, **Ahlan World Jordan** will select the class times.

## AFTER AND IN-BETWEEN CLASSES

**Students are welcome** to spend time in Ahlan World Cairo's **common room** during breaks and after class. Students will also find a wide collection of Arabic books that can be borrowed from school's library.

# LEVEL TEST

**Prior to your arrival**, we ask students to take our online MSA level test, leaving as much time as is possible before your course start date, after which we will schedule an oral level test (online). ECA level tests are also carried out online. Once we have received your test results for both, we are able to plan ahead and schedule your classes accordingly. **Absolute beginners need not** complete either placement test before their first lesson.

*All new students are welcomed with a complimentary lunch and introductory presentation on their first day of class.*



# HOW DO I REGISTER?

After receiving **your application** via email, we will send you an **invoice** detailing all services to be provided and their related costs. Payment must be made **by the date** indicated in the contract.

*Get an estimated prices and buy the courses through our website:*

**REGISTER NOW**



## HOW DO I PAY?

- Payment can be made **online via credit/debit card, bank transfer, PayPal, or in-person at Ahlan World Cairo.**

***Please note: bank transfer fees will be paid by the sender.***

- Relevant procedures and information for paying online will be included in the **invoice.**
- Students are required to pay for the invoice at **least two weeks prior to arrival** (if not agreed otherwise).
- Should a student wish to **add private classes or courses** following initial registration, this **can be done and paid for in Cairo** (online payment is available too).
- Prospective students who are already in Cairo can come **directly** to the centre to enroll or inquire about courses.

# FINAL CERTIFICATE



Course examinations are held **every two weeks**, and a course certificate will be given to each student on **their last day**. The certificate will show the **number of class hours attended, the level and type of course, and the final evaluation of progress**.  
**The final evaluation will be determined as follows:**

**60% for your final exam**  
**40% for the mid-course exam**  
**attendance**  
**class participation**

If a student cannot attend the final day, arrangements will be made to send the certificate by e-mail.

For special classes or seminars, the certificate will be signed by Ahlan world Cairo, and any partner organizations involved. Many universities will award credits for courses taken at Ahlan World Cairo, although it is each student's responsibility to confirm their universities policies and requirements **before registration** to ensure expectations are met.

## **Ahlan is accredited officially by CIMA**

(Certificat International de Maitrise en Arabe/International Certificate for Arabic Language proficiency) which is developed by institut du Monde Arabe with the expertise of France Education international.. is the first globally recognized certification that validate your MSA level  
For more info please **click here**



# EXTRACURRICULAR ACTIVITIES



The Ahlan Arabic Centre organizes many evening and weekend cultural activities which provide opportunities to speak Arabic. The Centre's cultural program offers excursions to historic sites, museums and oases as well as seminars on different topics, which are mainly in Arabic. Tours of the narrow, winding passages of old Islamic Cairo that surround the school area regular event, along with guided tours to Coptic Cairo, The Citadel, famous Mosques and Museums, and the Pyramids.

Weekend cultural activities and tours to other parts of Egypt are very popular and involve both students and staff. Trips are organized to sites outside of Cairo which highlight Egyptian history and heritage. For example: sleep in the desert under the stars on a trip to the Siwa or Bahareya Oases, the White and Black Desert, and Fayyoun; dive or snorkel in the Red Sea; explore the towns of Port Said, Suez and Ismailia.

All of the Ahlan World Cairo tours are organized within the context of responsible and sustainable tourism which benefits local communities and respects the environment. Extra-curricular activities include lectures and seminars on Ancient Egyptian History, Coptic Cairo History, Islamic History, Modern History, and Egypt's 25th January Revolution.

Cairo has a vibrant cultural nightlife and the Centre encourages its students to participate in its Cairo Nights program of folk shows, concerts, theatres, and cinema and felucca trips on the Nile.

The Centre also offers Egyptian cuisine and Oriental dance workshops. Professional experts provide Calligraphy, Islamic Arts, Media, Journalism and Translation workshops, as well as Nubian and Bedouin Cultural events.



# 06 ACCOMMODATION

## WHAT TYPES OF ACCOMMODATION ARE AVAILABLE?

Ahlan World Cairo is pleased to offer students the option to stay in an apartment share arranged by the school.

All accommodation is close to the school in beautiful area in Garden City , close to the city centre.

Apartments are fully furnished, equipped with kitchen facilities, and have **Wi-Fi** (password will be found posted on the wall in each apartment).

***All accommodation is mixed gender.***

***Note: all Ahlan World Cairo apartments are equipped with aircondition and washing machines***



# APARTMENTS



Students are **not charged** separately for electricity costs, although we kindly ask students to be mindful regarding their **electricity consumption**, taking care not to leave appliances on when not in use and to limit the use of fans or AC to a **minimum**. Furthermore, Egypt is an extremely water-scarce country, and each household is allotted a **set amount of water per week**. It is unlikely that you will face any shortages but do keep this in mind and try **not to use excessive amounts of water**.

Shared apartments are the most comfortable option that we can offer. Apartments are generally assigned ten days before your arrival date. All information concerning the apartment will be included with your other documents and arrival information.

The apartments are of 'good Egyptian standard' which would roughly translate to middle-class quality by Western standards. If, upon arrival, you find any issues with your flat or if there is anything additional, you require, please contact the school straight away and we will do our best to address your needs as quickly as possible.

Prior to your departure the management will complete a property checklist to ensure that everything is left as it was when you arrived. A cleaner will come to the apartment every two weeks, but students are also expected to keep their accommodation in a good condition. If the apartment is found to be in an unacceptable condition at the end of the stay, or if any items are found damaged or missing, students will be charged accordingly.

## APARTMENT PRICES

Single room: 360 US\$ monthly (90\$ per week).

Double room: 180 US\$ per person monthly (55\$ per week).

**NOTE:** The apartments are usually mixed gender, but shared rooms are allocated on a male/female basis.

*In the prices above, all bills are included (Internet, Gas, Water, Electricity)*





# USEFUL **07** INFORMATION WHAT TO PACK?

**In the summer,** the climate is warm and humid. There is some relief provided by the relative proximity of the Nile, but you should plan for warm/hot weather.

**In the winter,** it is quite cold and windy at night. There are no centralised heating systems, so we advise you to bring warm, winter clothes for use inside your accommodation.

The city of Cairo is generally not frequented by European tourists and the inhabitants are therefore not accustomed to some of the casual or revealing styles more popular in the West.

We ask that you do your best to show respect for the local population, and considering the possibility of offense in their interactions with European women, please do not bring/wear low-necked blouses or dresses, miniskirts, halter tops, or any other garment that will leave your mid-section exposed!

## EXCHANGE

The currency used in Egypt is the **Egyptian Pound (EGP)**.

**The Exchange Rate:**

USD to EGP : click [here](#)

Euro to EGP : click [here](#)

# 08

## TRAVEL

### HOW TO GET TO Cairo?



#### **ARRIVAL AND DEPARTURE**

If you have requested transportation to your accommodation, a representative of the Ahlan Arabic Center will meet you at your scheduled time of arrival outside the arrival hall,(after immigration procedures and baggage collection.

Your attendant will be holding a sign. saying  
**AHLAN-WORLD**

#### **HOW MUCH WILL THE TRANSFER COST?**

Cost of the transfer is 20 US\$.

#### **MUST I RECONFIRM MY AIRLINE RESERVATION?**

We recommend that everyone reconfirm his or her return ticket. This can be done by calling the airline directly or by going into a travel agency. The Ahlan Arabic Centre has the telephone information for all the airlines

**If you have not requested a transfer, we will arrange someone to meet you at your accommodation; please let us know your time of arrival in advance.**

# DOCUMENTS



You will need to contact your country's consulate or embassy to get precise information about the required documentation for your trip.

Typically, you will need your **passport** and a **visa stamp**. This stamp can easily be purchased after your arrival in the airport at banking kiosks that you will see before you pass through immigration.

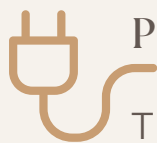
The cost will be 25 USD (or roughly 22 EUR) and you will receive change in Egyptian currency.

**The visa you buy at the airport lasts for 30 days**, after which you will need to renew it. You will need a copy of your rental agreement from your landlord in Egypt; if you are staying in our accommodation, we will provide you with this document.

**On your first day at the institute, please bring your passport as well as two photocopies of your passport for our records.**



# UTILITIES



## PLUGS AND ELECTRICITY

The electrical voltage in Egy is **220V**. Most outlets take **two-pin plugs**, although some take three. Adapters are easy to find if needed.

## INTERNET



**Free Wi-Fi** can be found at the school and at many cafes in the neighbourhood, as well as around the city. All accommodation provided by Ahlan World comes equipped with Wi-Fi.

**If needed, personal Wi-Fi connections** can be purchased (i.e., with a portable router or USB stick) at any of the main cell service providers that we have mentioned.

## TELEPHONE SERVICE



Cell phones are convenient and practical because it is possible to text messages (contact your provider first to confirm service and pricing), but the cost of calls will be based on both the call and the response.

To telephone from Egypt:

It is possible to buy an Egyptian SIM card that will last for about one month. They can be purchased at the Vodafone, Orange or Etisalat centers in Egypt.

Take your passport with you when you go to buy one; a card is 250/300 EGP.



09

# LIFE IN CAIRO



# EATING OUT

**Food and drink** prices in Egypt can vary widely. Cheap options are certainly **available**; oriental breakfast like foul, falafel and shakshoka. Also the Egyptian famous dish koushary, or a cup of coffee from a coffee shop, for example.

However, eating in **sit-down restaurants and western-style** cafes can be pricier. Alcohol is available for purchase in stores and at bars but can be quite expensive due to custom fees.

**Groceries** can be purchased at small markets found in every neighbourhood or at larger supermarkets such as Carrefour and Gomla Market, which can be reached by taxi. Large **fruit and vegetable markets** are also found in large supermarkets and offer the largest variety of goods. Prices for groceries also vary depending on the vendor but can be similar to those found in many western countries.



# 10 TERMS AND CONDITIONS

## ENROLLMENT

**Bookings** must be made by either emailing the school at **cairo@ahlan-world.org** or by completing the **online application** on the school's **website**. The school reserves the right to refuse admission to any student at the absolute discretion of the school management. If a booking is refused, all fees will be refunded.

## FEES

All fees for **on-site classes** must be received, in full, **two weeks before the course and/or accommodation start date**. If fees are not received by this time, the course/accommodation will be **cancelled**. It is not possible for a student to start a course or be accommodated if fees have not been received by the school.

All online courses must be paid **one week prior** to commencement.



## PHOTOGRAPH / FILM / MEDIA

At times the school **may photograph or film students** in various activity settings or may make use of such photographs and/or films made by students, for **marketing or promotional purposes**. A signed consent form must be completed with your e-Booking registration documents.



## HOMESTAY ACCOMMODATION

Students can usually **arrive at and depart** from their homestay accommodation **on Fridays**. **Additional nights are 20 US\$ per night**. **Twin rooms** are available for **up to 2 students** only. In exceptional circumstances (for instance illness) it may occasionally be necessary to change home-stay provision at the last minute. In such circumstances the school will always do its absolute best to inform the student in advance and to ensure that the student's preferences are met.

## RESIDENTIAL ACCOMMODATION & APARTMENTS

**The minimum age** for students wishing to **book residential accommodation** in student apartment is **eighteen years old**. **The minimum age for entry** into our school is **sixteen**. For all students below the age of eighteen, a **copy of our Parental Consent form, signed by a parent or guardian, must be provided to the school with your e-booking registration documents**.

There will be 100 US\$ deposit required on arrival, for your accommodation processing. This deposit will be refunded at the time of your departure.

## LIABILITY

**The school does not accept liability** for injury, illness, accident, damage to or loss of property and/ or personal effects, except when such liability is imposed under Egyptian law. **We strongly recommend students ensure they have appropriate, travel, medical, and personal-property insurance.**

## FORCE MAJEURE

**The school is not liable** for any failure to perform its duties as a result of events **beyond the schools** reasonable control such as fire, flood, war, acts of terrorism, storms, the outbreak of infectious diseases, government sanction and other instances that constitute force majeure. **In such instances no refunds can be made for services not received nor for any that are cancelled.**

**Ahlan World is closed on certain public holidays.** Students are advised to check the country-appropriate course calendar and plan accordingly.



# CLASS CANCELLATION POLICY

For **one-to-one classes (including online courses)**, if you cannot attend a private class and want to have it rescheduled, please inform the school **by 4pm one business day before** (e.g., should you wish to cancel a class scheduled for Sunday, your notification should be given by 4pm the preceding Thursday). Failure to give the requested notice will prevent us from being able to reschedule the class as requested, and it will therefore be **cancelled**, without a refund, instead.

**Online classes/ package** must be paid, in full, **one week before commencement**. All **on-site classes** must be paid, in full, **2 weeks before commencement**.

**Should you cancel the course, there will a 10% cancellation fee.**

For long term students taking a **small-group course** (two-to-one/three-to-one). **The school cannot reschedule any group class unless the entire group agrees.** In this case, the same cancellation notification policy detailed above applies.

For ECA and MSA daily group courses, **we cannot reschedule or refund individual lessons** within the group MSA/ECA daily course.

If you are **more than 15 minutes late** to a class, the teacher will be permitted to cancel the class and you will **not be refunded**.

**The following percentages of the total price of the package will be charged to the student, in case of cancellation, based on the number of days prior to the scheduled date of the booked course** (the exact date of cancellation will be considered to be the first day after receipt of the written notice):

- **Up to 41 days** prior to the starting course total of **registration fees** will be charged.
- **From 30 to 40 days** prior to the date of starting course **40%** of the total of the fees will be charged.
- **From 21 to 29 days** prior to the date of starting course **50%** of the total of the fees will be charged
- **From 15 to 20 days** prior to the date of starting course **70%** of the total of the fees will be charged
- **From 0 to 14 days** prior to the date of starting course **100%** of the total of the fees will be charged

**Note: Students are always welcome to change destination 14 days prior and go to another Ahlan World's School!**

Also, you can convert the amount of the tuition fees into online classes or use it as a **credit** for other time in any of Ahlan World's School, **valid in one year limited time**, from the date of the booked course.

**Cancellation notification** is to be either in person, via email, text message or any other means will be accepted subject to confirmation in writing. We reserve the right to **charge the amount of 50 \$** to cover any subsequent administrative expenses.

# SOCIAL MEDIA



# FOLLOW US

# STUDENTS TESTIMONIALS



## QUINTI CALABRESE (FRANCE)

'It's really like a little family'

I had a wonderful two weeks of classes at this school. The teachers and the whole team were great. The classes were very good. I never felt alone in Cairo thanks to them, they offered activities, and were always there to help me. It's really like a little family, great atmosphere. I hope to go back! :)



## SÉBASTIEN ROUSSEAU (FRANCE)

Amazing location, friendly staff and quality courses, this place is great for foreigners to immerse themselves into Cairo life and grasp every aspect of it.



## SILVIA RIZZOTTO (ITALY)

'A beautiful place to learn Arabic'

Great school where you can learn both Modern Standard Arabic and Egyptian Colloquial Arabic. Method and textbooks are very useful, and you can feel you are making progress. Teachers are fantastic: well trained and always willing to welcome you and help you in Cairo! A beautiful place to learn Arabic and get to know Egyptian culture!

## CONTACT US

## AHLAN WORLD

→

## WHERE WE ARE?

Website – [www.ahlan-world.org](http://www.ahlan-world.org)

### Ahlan World Italia - Treviso

[ahlan@ahlan-world.org](mailto:ahlan@ahlan-world.org)

+39 349 4555202

Facebook - Ahlan Savona

### Ahlan World Egypt - Cairo

7 Gamal Al Din Abou Al Mahasen,  
Qasr El Nil, Cairo Governorate  
11519,  
Cairo – Egypt  
[click here](#)

Facebook - Ahlan Egypt Cairo

[cairo@ahlan-world.org](mailto:cairo@ahlan-world.org)

+20 1 129891993  
+20 2 27862847

### Ahlan World Jordan

17 Kharija al-Ashja'i Street  
Jabal Al-Webdeh, Amman

Near Terra Santa College and Kuliya  
al-Shari'a Mosque

Our exact address can be found on  
[Google Maps](#)

**(Ahlan World Jordan for Arabic  
Language)**

Facebook – Ahlan World Arabic  
(Ahlan World Jordan)

Instagram – Ahlanworld.Jordan

**Email prior to arrival:**  
[amman@ahlan-world.org](mailto:amman@ahlan-world.org)

**Email in-country:**  
[info@ahlan-world.org](mailto:info@ahlan-world.org)

**+962 6 46 15 315**

### Ahlan Egypt - Alexandria

8, El-Gorfa El-Togareya Street  
Mansheya,  
Alexandria – Egypt  
[click here](#)

Facebook - Ahlan Egypt  
Alexandria

[alexandria@ahlan-world.org](mailto:alexandria@ahlan-world.org)

+20 3 4830138  
+20 1 280849706

WE ARE LOOKING  
FORWARD TO MEET  
YOU SOON IN  
AHLAN WORLD  
CAIRO!!

